

# Surgical Solutions

Surgical Lighting

**FLOWER LED**  
Surgical Lighting System

Brighten your Expertise



One Integrated Approach to Healthcare

## Adjustable colour temperature: For Your Visual Comfort

FLOWER LED surgical lighting with adjustable colour temperatures retains all the benefits of white LEDs while offering additional functions. Selecting from 4 calibrated colour temperatures, the user can choose a light adapted to their visual sensitivity and preferences - warmer colours aiming towards orange, or cooler tones, aiming towards warm white. Depending on the type of surgery, the surgical team can easily adapt the color



3 500 K  
Ra=95 / R9=91



4 000 K  
Ra=95 / R9=97



4 500 K  
Ra=95 / R9=97



5 500 K  
Ra=95 / R9=97

Homogeneous and constant quality of light across the different colour temperatures and over time.

### How Does that Work?

#### Optimal Duo of White&Yellow LEDs

Contrary to the light generated by a combination of coloured LEDs (green, red, blue...) which have a tendency to decline over time and need regular recalibration to conserve its properties, FLOWER LED surgical lights with adjustable colour temperature option is obtained by combining white LEDs and yellow LEDs with different colour temperatures.

### PRACTICAL ASPECTS CUSTOMER-ORIENTED

#### Flexible system

The light, camera and monitor arm with considerable swiveling and tilting range for all commercially available screens can be attached to an individual ceiling suspension and are lightweight and safe to position. 4 arms can be used per ceiling support unit.

\*Performance + 10% according to IEC60601-2-41 / \*\*Performance 0/-10% according to IEC60601-2-41 / \*\*\*Performance + 6% according to IEC60601-2-41

# TECHNICAL SHEET

## FLOWER LED



**FLOWER LED  
E700/700**



**FLOWER LED  
E500/500**



**FLOWER LED  
E700/500**

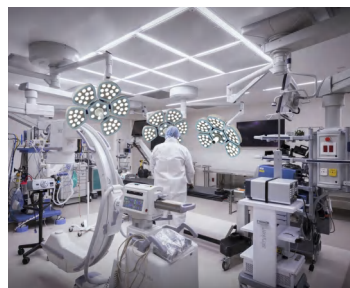


**FLOWER LED  
E700**



**FLOWER LED  
E500**

FLOWER LED Model	E700/700	E700/500	E500/500	E700	E500
Voltage	95~245V, 50/60HZ	95~245V, 50/60HZ	95~245V, 50/60HZ	95~245V, 50/60HZ	95~245V, 50/60HZ
Illuminance at distance of 1 m(LUX)	60,000-160,000/60,000-160,000	60,000-160,000/40,000-140,000	60,000-160,000/40,000-140,000	60,000-160,000	40,000-140,000
Brightness Adjustable	0-100%	0-100%	0-100%	0-100%	0-100%
Lamp Head Diameter	650MM/650MM	650MM/650MM	650MM/650MM	650MM	650MM
Quantity Of LEDES	61PCS/61PCS	61PCS/39PCS	39PCS/39PCS	61PCS	39PCS
Color Temperature Adjustable	3800-5500K	3800-5500K	3800-5500K	3800-5500K	3800-5500K
Color rendering index Ra	96	96	96	96	96
Color rendering index R9(Red)	98	98	98	98	98
Light Field Size Adjustable	150-350MM/150-350MM	150-350MM/120-280MM	120-280MM/120-280MM	150-350MM	120-280MM
Total radiant flux density	364W/m2	364W/m2	364W/m2	364W/m2	364W/m2
Endoscopy Mode	YES	YES	YES	YES	YES
Endoscopy Mode LEDES	6PCS/6PCS	6PCS/6PCS	6PCS/6PCS	6PCS	6PCS
Illumination For Endo-Mode	10%	12%	15%	10%	15%
LED service life	80,000hrs	80,000hrs	80,000hrs	80,000hrs	80,000hrs
Main Material	Aluminum	Aluminum	Aluminum	Aluminum	Aluminum
Rotating Angle Of Arm	>540&deg;	>540&deg;	>540&deg;	>540&deg;	>540&deg;
LED Bulb Power	1w Each Pc	1w Each Pc	1w Each Pc	1w Each Pc	1w Each Pc
Input Power	400w	400w	400w	400w	400w
Operating element	Touch Control	Touch Control	Touch Control	Touch Control	Touch Control
Light head protection rating	IP54+FireProof	IP54+FireProof	IP54+FireProof	IP54+FireProof	IP54+FireProof
Depth of illumination L1+12	1400MM	1200MM	1100MM	1400MM	1100MM
Lamp weight	700+700=52KGS	700+500=49KGS	500+500=46KGS	700+700=52KGS	500+500=46KGS
Packing	3 Wooden Cartons	3 Wooden Cartons	3 Wooden Cartons	3 Wooden Cartons	3 Wooden Cartons
LCD Touch Screen 4.3Inches	Optional	Optional	Optional	Optional	Optional
Back Up Battery (4-6hrs)	Optional	Optional	Optional	Optional	Optional
LED Bulb Size	20MM	20MM	20MM	20MM	20MM
Internal/External Sony Camera(20X)	Optional	Optional	Optional	Optional	Optional
Monitor With Extra Arm(22 Inches)	Optional	Optional	Optional	Optional	Optional
LCD Touch Screen 5Inches	Optional	Optional	Optional	Optional	Optional



# TECHNICAL SHEET

## FLOWER LED



**FLOWER LED  
E700L**



**FLOWER LED  
E700L+BATTERY**

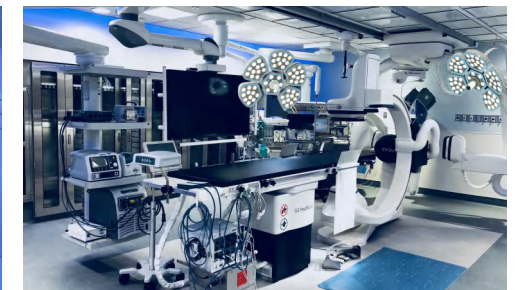


**FLOWER LED  
E500L**



**FLOWER LED  
E500L+BATTERY**

FLOWER LED Model	E700	E500
Voltage	95~245V, 50/60HZ	95~245V, 50/60HZ
Illuminance at distance of 1 m(LUX)	60,000-160,000	40,000-140,000
Brightness Adjustable	10-100%	10-100%
Lamp Head Diameter	650MM	650MM
Quantity Of LEDS	61PCS	39PCS
Color Temperature Adjustable	3800-5500K	3800-5500K
Color rendering index Ra	96	96
Color rendering index R9(Red)	98	98
Light Field Size Adjustable	150-350MM	90-260MM
Total radiant flux density	364W/m2	364W/m2
Endoscopy Mode	YES	YES
Endoscopy Mode LEDS	6PCS	6PCS
Illumination For Endo-Mode	10%	15%
LED service life	80,000hrs	80,000hrs
Main Material	Aluminum	Aluminum
Rotating Angle Of Arm	>540&deg;	>540&deg;
LED Bulb Power	1w Each Pc	1w Each Pc
Input Power	400w	400w
Operating element	Touch Control	Touch Control
Light head protection rating	IP54+FireProof	IP54+FireProof
Depth of illumination L1+12	1400MM	1100MM
Lamp weight	700+700=52KGS	500+500=46KGS
Packing	3 Wooden Cartons	3 Wooden Cartons
LCD Touch Screen 4.3inches	Optional	Optional
Back Up Battery (4-6hrs)	Optional	Optional
LED Bulb Size	20MM	20MM
Internal/External Sony Camera(20X)	Optional	Optional
Monitor With Extra Arm(22 Inches)	Optional	Optional
LCD Touch Screen 5Inches	Optional	Optional



### Energy Efficiency

Operating costs for ventilation ceilings and air-conditioning systems are reduced due to low surface temperature of <math><2^{\circ}\text{C}</math>

### Service / Maintenance

Service and maintenance are aided by the D-A-S (Data Analysis System), for determining operating hours and other functional concerns



### Technology

Lens combination was developed with primary and secondary optics for light bundling. We use high-performance LEDs with a maximum color rendering index. Color temperature is variable, and the illumination intensity is dimmable

### Optimized View

Endoscopy mode provides improved contrast for surgeons using imaging procedures. Monitor reflection is reduced during endoscopic procedures while offering adequate background lighting to support the orientation of the entire surgical team

### Color Temperature Selection

Color temperature selection can be set individually for Flower LED. There are three levels from 3,800 K to 5,500 K, yielding high-contrast light for different types of tissue

### Light

Flower LED Illumination in both area and depth is optimal and shadow-free, with the ideal ratio of luminaire to light field diameter. Provides a natural color-rendering index with white light (Ra of 96 at all light levels, R9 of 98 in the red region). It can be regulated to 160,000 lx

### Hygiene

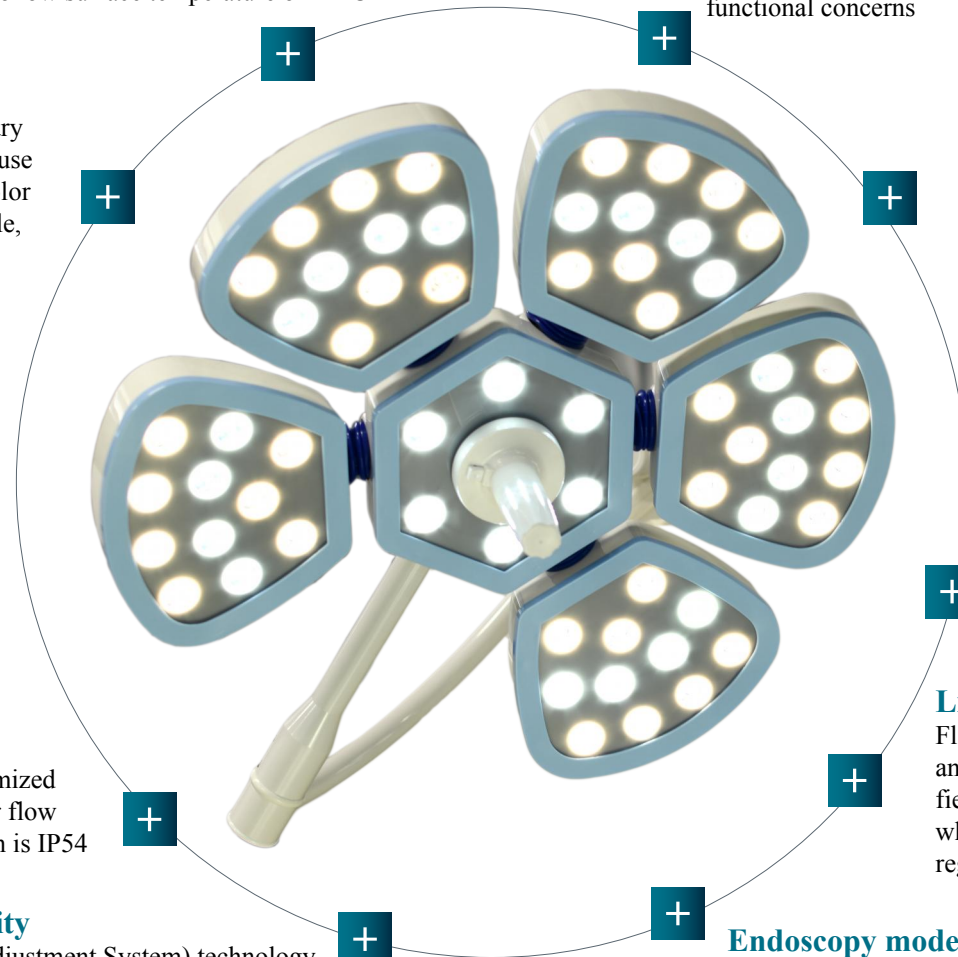
Flower LED include a flow-optimized luminaire housing for laminar air flow ceilings. The degree of protection is IP54

### Sustainability

LAS (Light Adjustment System) technology creates 100% lighting power, even after many years of use

### Endoscopy mode

Switch to White LEDs for optimum endoscopic intervention conditions



**CAMERA (INTERNAL & EXTERNAL)**  
**More Details, Better Visualization**  
**Fascinating Images-With Clear, Sharp Contours**



**High Image Quality**

- Camera With 20X Optical Zoom With 1950\*1080P HD Solution
- Finely Textured Images With Clear, Sharp Colors
- Remarkably Better Colors For Better Attention To Detail And A Brilliant Rendition

**Ultra High Definition**

- Exmor R Sensor - Clearer Images In Every Condition
- Twice As Sensitive As Conventional Sensors
- Higher Image Quality In Low Light Conditions

**Easy Handling**

- Easy Installation And Modification Or Retrofitting Of Existing OR Light Systems
- Mechanical And Electronical Image Rotation
- Flexible And Independent Operation Via Remote Control
- Optional Operation Via Wall Control Unit

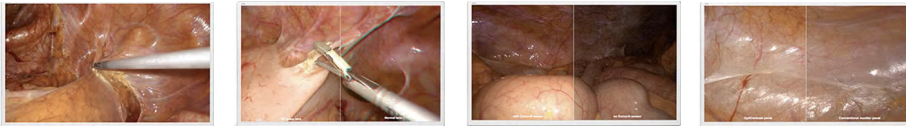


IMAGE SENSOR	SONY 1/2 8TYPE "EXMOR" CMOS, SUPPORT PROGRESSIVE MODE
IMAGE SOLUTION	1920*1080P, APPROX. 2,140,000 PIXELS
VIDEO OUTPUTS	20X OPTICAL ZOOM, 12X DIGITAL ZOOM
ASPECT VIDEO	SDI
FOCUS OPERATING	16:9
WHITE BALANCE	MANUAL & AUTO
REMOTE CONTROL	AUTO, ATW, INDOOR, OUTDOOR, ONE, PUSH WB, MANUAL WB
WIRELESS REMOTE CONTROL	STANDARD ACCESSORIES
HARD DISK FOR STORE	1T
POWER	6.8W
VOLTAGE	DC12-30W, 1.5A
INSTALLATION	INTERNAL & EXTERNAL OPTIONAL
MONITOR	22INCHES HANGING WITH ARM
SOUND COLLECTION	STANDARD



**E700/700**  
Internal Camera

**E700/500**  
Internal Camera

**E500/500**  
Internal Camera



**E700**  
Internal Camera



**E500**  
Internal Camera



**E700**  
Internal Camera



**E500**  
Internal Camera



**E700/700**  
External Camera

**E700/500**  
External Camera

**E500/500**  
External Camera



**E700**  
External Camera



**E500**  
External Camera

**FLOWER LED**  
SMART INNOVATION



**ICE COLD AND EFFICIENT  
A NEW GENERATION OF  
SURGICAL LIGHTS.**

**FLOWER LED**

## **PERFORMANCE INNOVATIVE TECHNOLOGY**

FLOWER LED is a new generation of surgical lights. The latest LED technology with user-relevant features can be configured to suit individual requirements and offers the perfect lighting solution.

### **ICE COLD AND EFFICIENT A NEW GENERATION OF SURGICAL LIGHTS.**

In the operating room, shadow-free lighting that does not change the surrounding climatic conditions and minimally affects air flow is essential. The wide variety of performed procedures calls for extreme flexibility, and equipment must be adaptable to individual requirements at all times. Time for the new Flower LED technology