



# JD1700 LED PROCEDURE LAMP



## Power. Clarity. Efficiency.

Exam lighting you can rely on when the stakes are high.

The JD1700 LED Procedure Lamp delivers 100,000 LUX of high-intensity illumination to perform minor procedures and examinations with accuracy. The lightweight and compact design make it easy to position the fixture for maximal efficiency. So you can stay focused on the task at hand.

- 18 precisely positioned LED optics deliver high-level illumination and superior shadow control
- Color temperature of 5,000K and a CRI of 96+ provide excellent color accuracy to distinguish between tissues
- The ergonomic handle is off-center to maximize the light field for broader examinations



NANCHANG MICARE MEDICAL EQUIPMENT CO.,LTD.  
Web: [www.micare-med.com](http://www.micare-med.com)    [www.ledoperatinglamp.com](http://www.ledoperatinglamp.com)  
Add: Yaohu West 5th Road, Hi-Tech Zone, Nanchang,Jiangxi,China

**CE   ISO   FDA**

Ideal for use in:  
ICU Rooms • ED / Trauma Departments • Procedure and Exam Rooms  
Labor and Delivery Units • Cosmetic Surgery Center • Veterinary Surgery Center  
Gynecology And Delivery • Orthopedics Examination • Dental Surgery



100,000  
LUX



Sensor Switch  
Intensity Control



96+  
CRI

## Reliable and safe – to simplify the everyday by specialists

Reliable surgical lighting is essential in clinics and Medical practices indispensable. The examination lights of MICARE make everyday work easier for examinations as well as in the preparation for the operation.



## Efficient LED technology and flexibility for optimal support in daily practice

The examination lights bring the latest LED technology to the medical examination area and are characterized by their high mobility and the good positioning of the lamp body in the daily work.

## Variable mounting – adaptable in any space

Ceiling mount, wall mount, rail clamp or Mobile stand: The examination light JD1700 is flexible and can be used and covers all space requirements.

## Benefits for your environmental balance

For everyone who is already thinking about tomorrow today JD1700 the light of choice. simply because because they not only provide optimal wound field illumination



## Many advantages for your benefit

- modern LED technology
- Outstanding light output and efficiency
- long service life of the LEDs
- easy handling
- functional and ergonomic design
- comfortable positioning
- ergonomic handle
- light weight
- Completely closed lighting system
- easy cleaning
- high standard of hygiene





TECNICAL DATA SHEET

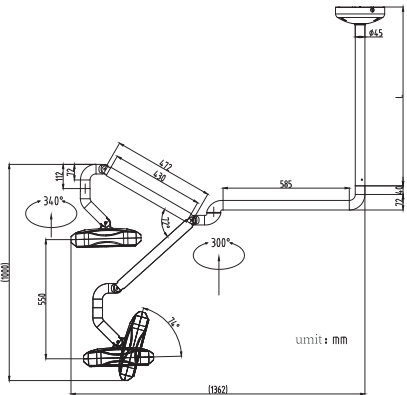


Model:	JD1700J (Double Ceilin	JD1700 (Single Ceiling)	JD1700L (Portable)	JD1700G (Wall Mounted)
L ight Intensity (MAX.)	g)100,000L UX	100,000LUX	100,000LUX	100,000LUX
Brightness Adjustable:	0%-100% (Sensor)	0%-100% (Sensor)	0%- 100% (Sensor)	0%- 100%(Sensor)
Switch Control:	Sensor (Non-Touch)	Sensor (Non-Touch)	Sensor (Non-Touch)	Sensor(Non-Touch)
Voltage:	95-245V	95-245V	95-245V	95-245V
Power:	30W	30W	30W	30W
Bulb life:	80,000hrs	80,000hrs	80,000hrs	80,000hrs
Color Temperature:	5,000K	5,000K	5,000K	5,000K
Lamp head diameter:	370MM / 370MM	370MM	370MM	3 70MM
Facula diameter:	130mm -170MM	130mm -170MM	130mm -170MM	130mm -1 70MM
Number of LEDs:	12PCS/ 12PCS	12PCS	12PCS	12PCS
L amp Head Weight:	2.2KGS / 2.2KGS	2.2KGS	2.2KGS	2.2KGS
Color Rendering Index:	>96	>96	>96	>96
R9:	>93	>93	>93	>93
Back Up Battry (6-8HRS)	/	/	Optional	/
Certifications :	CE, ISO13485, ISO9001, FDA, Free Sale Certificate, CFDA			

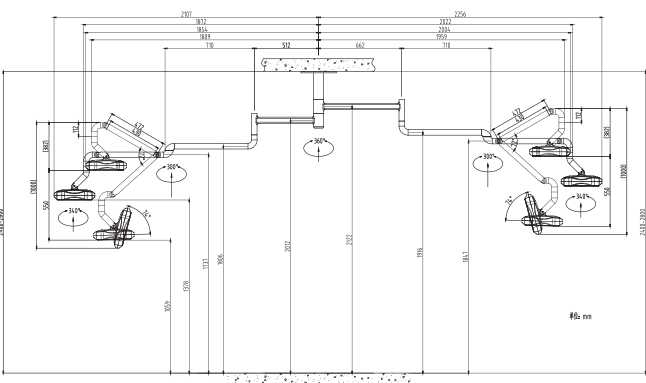


DIMENSION CHART  
FOR DIFFERENT TYPE

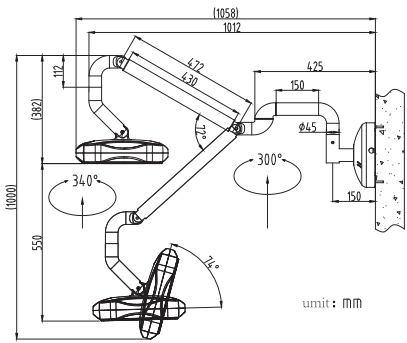
JD1700 LED PROCEDURE LAMP  
YOUR PARTNER IN LIGHTING



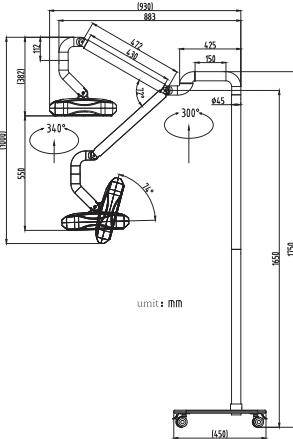
JD1700 SINGLE CEILING



JD1700J DOUBLE CEILING



JD1700G WALL MOUNTED



JD1700L PORTABLE MOBILE



360 Degree  
Rotation



5000K  
CCT



0% - 100%  
Dimming